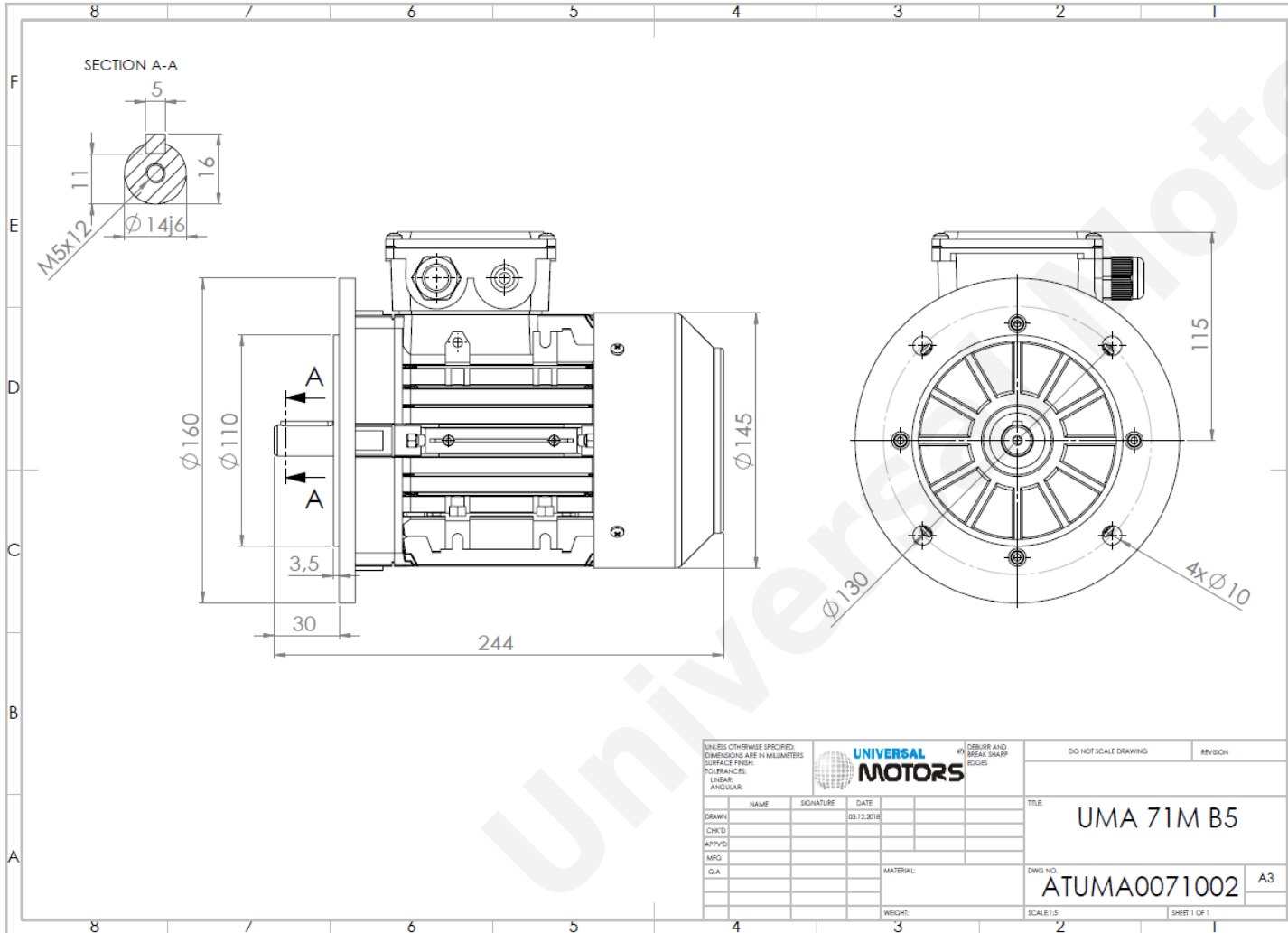




TECHNICAL DATA

Three Phase Electric Motors - Aluminum Frame
 UM2A 71M2-6
 0.25 kW / 0.33 Cv
 910 RPM



Motor type:	UM2A 71M2-6
Output:	0.25 kW / 0.33 Cv
Speed (min ⁻¹):	910 RPM
Frequency:	50 Hz
Voltage:	400 V
Current:	0.89 A
Power factor (Cos Ø):	0.66
Poles:	6
Insulation class:	F
Temperature rise Class:	B
Efficiency 50%:	52.2 %
Efficiency 75%:	59.7 %
Efficiency 100%:	61.6 %
Torque:	2.62 N.m
Tstarting/Tnominal:	2.1
Istarting/Inominal:	3.3
Tmaximum/Tnominal:	2.3
Noise:	52 Db(A)
Weight:	6.0 Kg
Brake AC:	AC2
Torque Brake DC:	4 N.m
Bearing DE:	6202 2Z
Bearing NDE:	6202 2Z
Torque Brake AC:	10 N.m
Brake DC:	REB-05-06

Regime - S1

Altitude - 1000m

Environment Temperature - 40°C

CONTACTS:

UNIVERSAL MOTORS Tel: +351 252 299 080
 Rua de São Brás,745 Fax: +351 252 299 089
 4480-782 VILA DO CONDE Mail: geral@universalmotors.pt

* References applied only in the UK